

# TECHSPAN

Smart Build Specialists

Industrial | Agribusiness | Rural

 Structured to Work

## About Us

At TechSpan we are an Australian family business who specialise in the custom design and construction of quality large structural steel buildings.

With more than 20 years in the industry, our experience allows us to seamlessly support clients through their entire construction project. Our Smart Build System enables you to save both time and money by helping you move quickly through the planning, design and approval processes. We manufacture and deliver a quality building kit to site. We then connect you to a network of trusted contractors to complete the building.

Here at TechSpan, we regard our team as our ultimate asset. Our team of highly skilled Design Consultants, Engineers, Tradesmen and Project Managers will work to take the stress out of your project and provide the solution you need. We are passionate about providing the highest quality structures and services for every client.

A track record of successful projects in both government and private sectors are a proven testament that our buildings are structured to work - from planning to completion.

 **Structured to Work**

-  **Consult**
-  **Manufacture**
-  **Connect**

# Hay Sheds

Techspan, by hard work and commitment, have built a brand of sheds well known for their quality and integrity. Hay sheds have been our bread and butter during our 20+ years of building structural steel sheds forming the backbone of our business.

As the preferred supplier for some of Australia's largest hay producers, and with a network of 1000+ farmers throughout the country, your peace of mind is our priority. We understand that with reputation comes expectation, an expectation we meet every single time. Needless to say, Techspan knows what works and what doesn't, where to cut costs and where not too.

## HOW BIG SHOULD I BUILD MY HAY SHED?

There are four main questions to consider when deciding how big your hay shed needs to be:

- 1. What size hay bales do you plan to store?** This will help you determine your total size.
- 2. How many bales do you plan to store?** What is the maximum number of bales you'd expect to have in your shed at one time? It's best to overestimate a little to ensure you don't run out of space.
- 3. How high can you stack them?** With the equipment and machinery you have, how high can you stack the bales? Common shed heights allow for 5 or 6 bales high.
- 4. Will the shed fit on the site you want it?** Lastly, but importantly, will a shed big enough to store all your hay fit on the site where you want it placed?

## Options

### Custom Bay Sizes

We can customise the bay spacing in your new hay shed to suit your hay bale dimensions. This ensures no space is wasted. Bay spacings of up to 9m are offered. Portal Spans from 12m up to 50m are all available.

### Extra-large Openings

We can remove columns to allow easier access to feed and allow larger vehicles to access your building. We can help you create a shed to suit your business needs.

### Roof Ventilation

Hay is notorious for producing moisture. Reduce the chance of mould and corrosion to your property with proper air circulation. Our roof ventilation options are excellent at reducing the moisture in your hay shed.

### Structural Steel Construction

The structural steel frame of TechSpan hay sheds is stronger and stands up to more bumps than a purlin shed. Read our article on the difference between structural steel and purlin construction for more information.

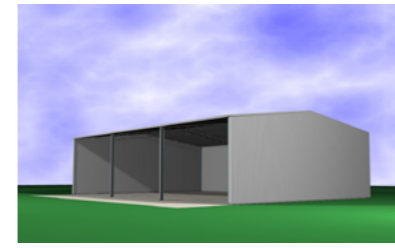
### Building Approval Assistance

The TechSpan Smart Build System is structured to work from planning to completion. We work with you every step of the process to enable you to get the shed you need, including assistance and management of council approvals.

### Custom Wall Configurations

How you set your shed up is completely up to you. Whether you need one open side, open ends or a fully open cover, we can design your hay shed to suit you.

## Standard Sizes

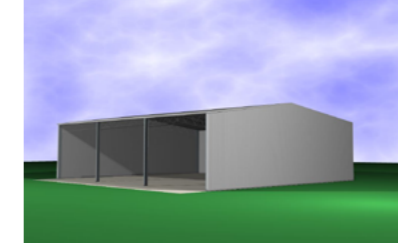


### 18m Hay Shed

**SPAN (DEPTH)** – 18m  
(15 Bales deep)

**LENGTH** – 24m – 3 bays @ 8m  
(3 off 8' bales wide per bay)

**EAVE HEIGHT** – 6.0m  
(5/6 Bales High)

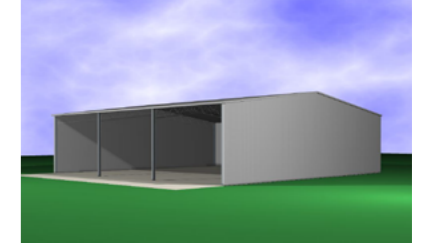


### 21m Hay Shed

**SPAN (DEPTH)** – 21m  
(17 Bales deep)

**LENGTH** – 24m – 3 bays @ 8m  
(3 off 8' bales wide per bay)

**EAVE HEIGHT** – 6.0m  
(5/6 Bales High)



### 24m Hay Shed

**SPAN (DEPTH)** – 24m  
(20 Bales deep)

**LENGTH** – 24m – 3 bays @ 8m  
(3 off 8' bales wide per bay)

**EAVE HEIGHT** – 6.75m  
(6/7 Bales High)

BUILDING SPAN		3 BAYS (24 M)	4 BAYS (32 M)	5 BAYS (40 M)	6 BAYS (48 M)	7 BAYS (54 M)
18m	SHED KIT START PRICE	\$44,870 <sup>++</sup>	\$54,750 <sup>++</sup>	\$64,630 <sup>++</sup>	\$74,510 <sup>++</sup>	\$84,390 <sup>++</sup>
	BALE CAPACITY (8' x 4' x 3' Sq.)	810	1080	1350	1620	1890
21m	SHED KIT START PRICE	\$50,500 <sup>++</sup>	\$61,230 <sup>++</sup>	\$71,960 <sup>++</sup>	\$82,690 <sup>++</sup>	\$93,420 <sup>++</sup>
	BALE CAPACITY (8' x 4' x 3' Sq.)	918	1224	1530	1836	2142
24m	SHED KIT START PRICE	\$59,690 <sup>++</sup>	\$72,350 <sup>++</sup>	\$85,010 <sup>++</sup>	\$97,670 <sup>++</sup>	\$110,330 <sup>++</sup>
	BALE CAPACITY (8' x 4' x 3' Sq.)	1260	1680	2100	2520	2940

### STANDARD INCLUSIONS

- » Painted Columns
- » Pre-Galvanised Trusses
- » 3 x Walls enclosed (open to east)\*
- » Zinc Cladding
- » Site-Specific engineering (Wind Region A, TC 2.5)\*\*
- » Australian Steel & Manufacturing

### THE FOLLOWING OPTIONS ARE ALSO

#### AVAILABLE AT AN EXTRA COST:

- » Delivery
- » Installation
- » Box gutters
- » Colourbond Cladding
- » Hot-Dip Galvanised Columns
- » Additional Doorways & Openings

\*,\*\* Additional Engineering upgrades may apply depending on site location.

++ All prices are indicative only and exclude GST. Prices may vary depending on your customisations and specific requirements. Delivery cost depends on site location & is not included in this estimate. Installation cost depends on site location & is not included in this estimate. The cost of additional doorways & openings will depend on your exact requirements requirements. This extra cost is not included in this estimate.



# Machinery Sheds

Looking for a way to get your valuable equipment out of the weather? Our machinery sheds can be customised to suit your exact requirements. We understand machinery can come in all shapes and sizes. We work with you to design the perfect shed for your needs.

## MACHINERY SHED DESIGN CONSIDERATIONS

There are a few important things to consider when designing your machinery shed:

- 1. How much space do you need under cover?** How large does your shed need to be to fit in all the machinery you need to protect from the elements?
- 2. What size openings do you need for machinery access?** If you have large or wide machinery, you need to be sure it will fit through the entrance.
- 3. Open walls or large doors?** Depending on what your protecting you may chose large sliding or roller doors, or to keep open walls for easy access.
- 4. Site location, access, levels and Drainage**
- 5. Extra options:** Cladding, Enclosed workshop bays, Canopies, Cranes.

## Additional Options

### Open & Closed Bays

Our buildings can be adapted to include any combination of open and enclosed bays. For easy access, you may like to leave one full side open. Or perhaps you require one bay enclosed for a clean and secure workshop. It's all possible.

### Removed Column Bays

Do you have large or odd-shaped equipment? We provide the option of removing columns to allow larger machines to access your building. This is easily incorporated into your design.

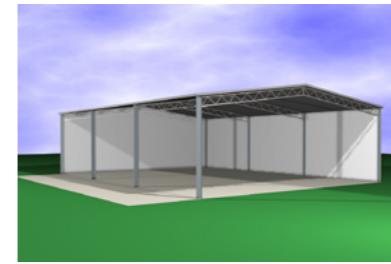
### Canter Lever Awnings

It is never fun unloading trucks in the rain. Sometimes it is handy to have a little bit of extra room under cover, on the side or back of your building.

### Multiple Door Options

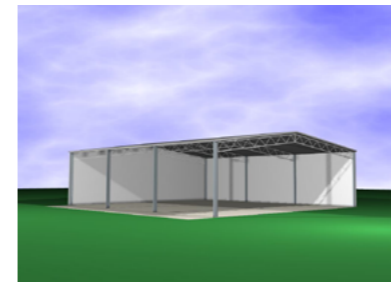
Whether you need roller doors, sliding doors or personnel doors, we have a range of roller doors to suit all applications.

## Standard Sizes



### 18m Machinery Shed

SPAN (DEPTH) – 18m  
 LENGTH – 24m – 3 bays @ 8m  
 EAVE HEIGHT – 6.0m  
 TOTAL COVERED AREA – 432m<sup>2</sup>  
 Open end & side



### 21m Machinery Shed

SPAN (DEPTH) – 21m  
 LENGTH – 24m – 3 bays @ 8m  
 EAVE HEIGHT – 6.0m  
 TOTAL COVERED AREA – 504m<sup>2</sup>  
 Open end & side



### 24m Machinery Shed

SPAN (DEPTH) – 24m  
 LENGTH – 24m – 3 bays @ 8m  
 EAVE HEIGHT – 6.0m  
 TOTAL COVERED AREA – 576m<sup>2</sup>  
 Open end & side



### 30m Machinery Shed

SPAN (DEPTH) – 30m  
 LENGTH – 24m – 3 bays @ 8m  
 EAVE HEIGHT – 6.0m  
 TOTAL COVERED AREA – 720m<sup>2</sup>  
 Open end & side

SPAN	LENGTH	BASE PRICE	+ 1 BAY	HDG	HDG/EXTRA BAY
18m	24m	\$43,070.00++	\$10,650.00++	\$2,042.00++	\$510.50++
21m	24m	\$48,310.00++	\$12,160.00++	\$2,310.00++	\$577.50++
24m	24m	\$54,840.00++	\$14,070.00++	\$2,933.00++	\$733.25++
30m	24m	\$67,734.00++	\$16,900.00++	\$3,345.00++	\$836.25++

### STANDARD INCLUSIONS

- » Painted Columns
- » Pre-Galvanised Trusses
- » 2 x Walls enclosed
- » Zinc Cladding
- » Site-Specific engineering (Wind Region A, TC 2.5)\*\*
- » Australian Steel & Manufacturing

### THE FOLLOWING OPTIONS ARE ALSO AVAILABLE AT AN EXTRA COST:

- » Delivery
- » Installation
- » Box gutters
- » Colourbond Cladding
- » Hot-Dip Galvanised Columns
- » Additional Doorways & Openings

\*,\*\* Additional Engineering upgrades may apply depending on site location.

++ All prices are indicative only and exclude GST. Prices may vary depending on your customisations and specific requirements. Delivery cost depends on site location & is not included in this estimate. Installation cost depends on site location & is not included in this estimate. The cost of additional doorways & openings will depend on your exact requirements requirements. This extra cost is not included in this estimate.



# Grain Sheds

Do you want to save money by keeping your harvest and feed properly stored? For a quick and easy solution for your feed cover, nothing beats a large storage grain shed. Our durable designs make storage a breeze.

A grain shed might cost you more than a silo upfront, but if you choose the right features, the versatility, ease of use, and practically unlimited size could make it worth it. If you are considering a grain shed the key is to find a shed design that is structured to work for you and has all the features you'll need.

Being able to load and unload your grain quickly and easily is commonly the top reason to choose a shed over a silo. You can get grain into the shed quickly with a tipper, and unload it just as fast with a loader and bucket. If you prefer, you can also include a built-in auger system, or use it with a portable auger, just like you would with a silo. Don't forget that these sheds are a great place to store your machinery during the off season.

## GRAIN SHED DESIGN CONSIDERATIONS

There are a few important things to consider when designing your grain shed:

- 1. How much grain do you want to store?** It's important to ensure you will have enough bunker volume to store the maximum amount of grain you'll need to store.
- 2. How are you going to load and unload the shed?** You might consider including a built-in auger system, or using a portable auger. Or for fast loading prefer a shed configuration that will allow use of a tipper.
- 3. Open fronted or enclosed and sealed?** This will depend on how long you're planning on storing the grain, your local conditions, and whether you need your storage to be vermin-proof.
- 4. Bunker wall options:** You can consider whether you need concrete, steel clad or canvas bunker walls.
- 5. Site location, access, levels and drainage.**
- 6. Floor Options** Consider whether you need concrete floor or dirt floor with ground tarps to maintain grain quality.



## Additional Options

### Auger Inlets & Outlets

Unloading and loading should be simple to operate and permit ample auger access. Our in built inlets and outlets make it easier to use your auger to manage your feed.

### Vermin Proofing

Don't risk contamination. Keep out rodents and birds with our unique PEST-GUARD rodent proofing system.

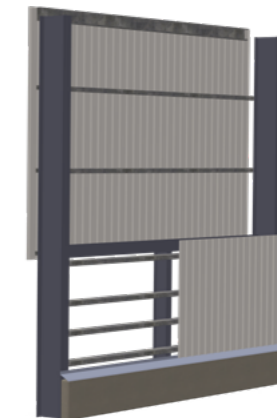
### Ventilation

Natural ventilation is important to help prevent mildew and contamination while your produce is being stored. We have ventilation solutions to provide the right atmosphere.

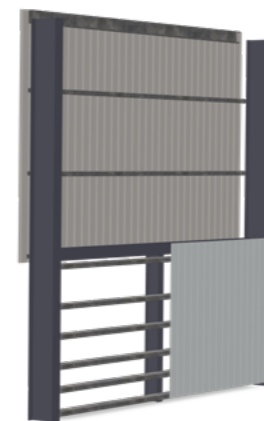
## Wall Cladding Options



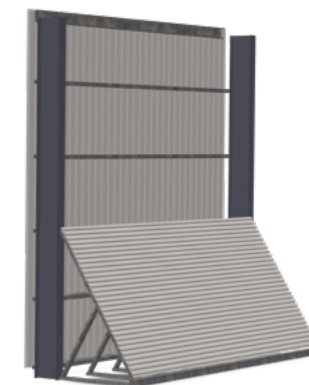
Full Concrete Wall



Steel & Concrete Bump Rail



Full Steel Wall



Self-Supporting Removable Steel Panels

(Can be retrofitted into existing sheds.)

## Grain Shed Capacity

SPAN	STACK HEIGHT	3 BAY (18M)	4 BAY (24M)	5 BAY (30M)	6 BAY (36M)
12m	2.5m	500 tonnes	750 tonnes	1000 tonnes	1250 tonnes
15m	3.0m	700 tonnes	1100 tonnes	1500 tonnes	1900 tonnes
24m	3.0mw	1000 tonnes	1700 tonnes	2400 tonnes	3100 tonnes

Tonnage is calculated using nominal wheat cubic metre weights. Actual storage capacity may vary depending on grain type and final shed configuration.

# Custom Sheds

At TechSpan we specialise in the design and construction of quality large steel buildings for agribusiness, industrial and rural applications. Our expert team can work with you to design a custom shed specifically for your needs, and assist you at every stage of your project, from design to completion, to ensure your shed is structured to work for you.

We are specialists in creating large custom steel sheds, 12 metres wide or bigger. Whether you need a custom rural shed or a custom industrial shed, or an extension to an existing shed, we can assist you to design, manufacture and install your large structural steel building. We have expert design consultants who can walk you through the options and work with you to ensure you're investing in the right custom shed for your needs.



## Custom Size

In many ways this is the single most important decision in your project. It is a juggling act managing space requirements, budgets and sometimes site restrictions. It is important to consider for future expansion in this area as there is nothing more frustrating than having your hard earned expansion stilled by lack of space.

## Custom Height

Have you considered your current and long term requirements in this area? Maybe you have been planning for some larger machinery or some higher pallet racking. Extra height is not as expensive as you might think.

## Custom Cladding

While the majority of sheds are clad with high tensile roll formed cladding, either Zincallume or Colorbond, there are other cladding options to consider. You may need fire-rated cladding, precast concrete, insulated structural panels, or more architectural cladding options to enhance the design of your shed.

## Custom Bay Spacing

The Bay spacing refers to the spacing of the portal rafters lengthways down the building. Our normal bay spacings range between 6 – 8 Meters. We can accommodate spacing both smaller and larger than this to suit individual requirements.

## Custom Mezzanine Floors

Including a mezzanine floor in your new project design is a cost effective way of increasing the floor area of your building without increasing its footprint. TechSpan can accommodate all your requirements in the area including stairs and balustrading.

## Removed Columns

TechSpan engineers can arrange for a column to be removed from an opening in your building. The weight is transferred to those adjacent by a lateral truss. This is great for situations where you might have large or awkward shaped machinery to get under cover, such as combine harvesters.

## Custom Sliding Doors

Sliding Doors are the most versatile and cost effective door option, having virtually limitless configurations. From a standard opening, to a whole sliding wall. Large doors are no use if you cannot open them! We insist on over-engineering our door hardware to ensure many years of trouble free operation.

## Custom Roofline

Most TechSpan buildings are constructed with a gable roof. This design is simple and functional making it suitable for most applications, but you may also want to consider a skillion roof or curved roof for your custom shed.

## Custom Extensions

If you already have an existing building, it may be an option to create a new extension as your business grows, rather than adding an entirely separate structure. Our design consultants can work with you to create a custom extension that joins to your existing shed and is structured to work for your needs.

# Why Choose TechSpan?



### Structural Strength

Our sheds are stronger by design. We only use genuine OneSteel and BlueScope Steel products and have the engineering and technical experience to ensure your structure is built to last.



### 25 Year Guarantee

We know that our sheds are so strong that we back them with a 25 year structural warranty, the 'TechSpan Smart Point Verified Guarantee'. With no small print, we give you the details upfront.



### Australian Owned and Made

We're proudly an Australian family company, with all of our products manufactured at our facility in Armidale NSW. We provide local jobs and support Australian charities, so when you buy from us you're supporting the Australian community.



### Customisation is Standard

We specialise in custom built sheds, designing and building your perfect shed at an affordable price.



### Weekly Project Updates

We keep you updated with weekly project updates so you'll always know how your project is progressing.



### Smart Point Verified

Your shed will be quality checked at 20 Smart Points as it moves through the planning and production stages, so you know it will be built to the highest standard.

# Proven Results



I love the way TechSpan accommodated every little detail I wanted customized on my sheds. The result from TechSpan was immaculate!...

**Developer**  
Armidale, NSW

The sheds look great and the cows love them and they are milking very well, and once more we are very happy with the sheds. Thank you!

**John Redgrove**  
Singleton NSW

I am absolutely delighted with my arena, the excellent quality of materials and construction and the outstanding customer service you and your team provided right through what is a very challenging construction project.

**Equestrian Center Owner**  
Maitland, NSW

Your pre-engineered design saved me thousands on the custom engineered design that I was expecting to use! - It was much easier too.

**Property Developer**  
NSW

I would recommend TechSpan to anyone wanting a quality job. Thank you for the fantastic shed! Everything was exactly as promised – No surprises.

**Farmer**  
Inverell, NSW

You guys sure know how to build a great hangar! Strong doors and a quality finish.

**Aerial Spraying Pilot**  
NSW

Everyone that comes here says "What a great shed!" The riding instructor, the vet, the farrier... Even before he said hello he says; "Great shed!"

**Karen**  
Glen Innes NSW

Mate, smashed it! John is really impressed with everything from start to finish.

**Phil – Shed Reseller**  
Muswellbrook NSW

Call Today **1800 350 450**



# Gallery

▼ **Carpendale Farms**  
- 30x30m Machinery Shed  
Goondiwindi, QLD



▼ **Barnie Buntine**  
- 12x24m Fodder Storage Shed  
Boorolong, NSW



▼ **Roger Coddington**  
- 18x32m Hay Shed  
Boorolong, NSW



▼ **Bruce Retschlag**  
- 20x30m Machinery Shed  
Upper Horton, NSW



▼ **Mark Schuurs**  
- 30x30m Machinery Shed  
Dalby, QLD



▼ **Carrol Cotton Gin**  
- 32x70m Storage Shed  
Carrol, NSW



▼ **Priefert Australia**  
- 18x32m Stable Complex  
Muswellbrook, NSW



▼ **Brian Page**  
- 15x24m Machinery Shed  
Mount Russell, NSW



▼ **Brian Johnson**  
- 36x120m Hay Shed  
Carrol, NSW



▼ **John Scarrabelotti**  
- 21x48m Machinery Shed  
Kyogle, NSW



▼ **Kennedy Air**  
- 60x36m Aircraft Hangar  
Gunnedah, NSW



- ▶ **Consult**
- ▶ **Manufacture**
- ▶ **Connect**



**T** 1800 350 450

**E** [sales@techspanbuilding.com.au](mailto:sales@techspanbuilding.com.au)

**A** 87 Seaton Street, Armidale  
NSW 2350 Australia

**[techspanbuilding.com.au](http://techspanbuilding.com.au)**